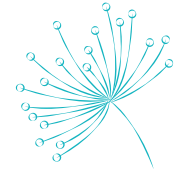


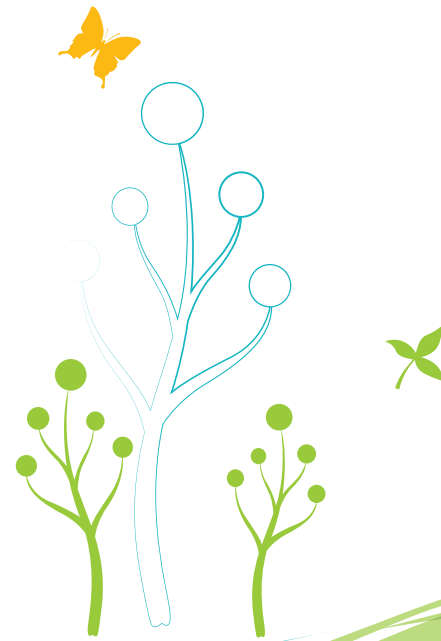


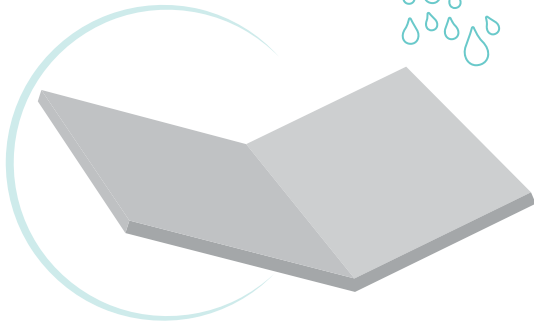
A super luxury villa project.
Contemporary lifestyle.



nature
live more...

eathspace™
find your space for living





What's new?

Project Features

Butterfly Roofing

Here's introducing a freshly conceptualised roofing concept - Butterfly Roofing. This specially designed roofing protects the house from heat, thereby converting it into **a perfect base to place solar panels**. That's not it; butterfly roofing **can be used to harvest rain water**, thereby preventing any leakage, and in turn providing long life to the structure.

Reverse Osmosis Water Purification System

Each villa is fitted with a reverse osmosis water purification system. Keeping in mind the water-shortage issue faced by many,

Common Rainwater Harvesting

We have set up a **common rainwater storage unit**, which ensures water distribution to all villas in times of water scarcity.

24x7 Security

Our surveillance system has been designed to ensure your security 24x7. In addition to our security personnel, we have set up CCTV and ip camera in the premises. World class amenities and other facilities are the other assured qualities of Earthspace.

Project Summary

Super Luxury contemporary villa project at Thiruvankulam, Cochin
4.3 Acres of land
50 Super Luxury Villas
3, 4 & 3 BHK duplex villas
Project Under Construction
Completion December 2016

Development Permit

A3-3807/11/D/DF
dated 20/12/2011

Project Architects & Consultants

M/s AHR Architects, Cochin

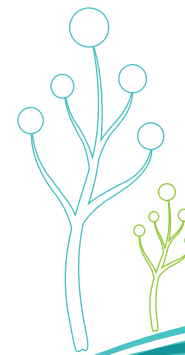
Financial Consultant & Auditors

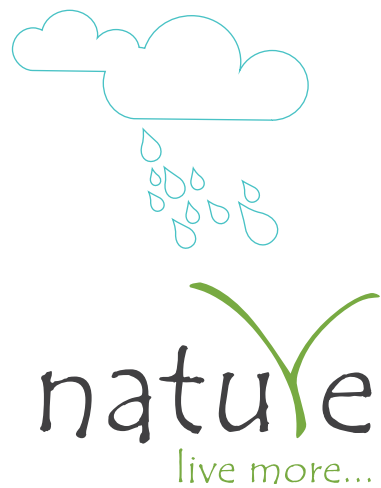
M/s JVR Associates
Chartered accountants, Cochin

Our Banks

SBI, Axis Bank, HDFC & DHFL

nature
live more...



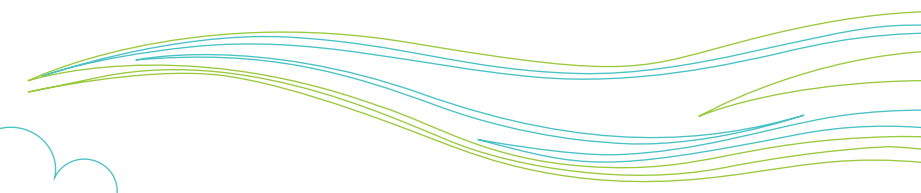


A super luxury villa project. Contemporary lifestyle.

Ever wondered how creative concepts can provide you with an opportunity to live closely to the nature? Our sophisticatedly built villas, with world class and unique contemporary designs, are sure to shower you with a living experience worth treasuring lifelong and passing on from generation-to-generation.

Serenely situated in Thiruvankulam, 12 kilometers from Vytilla, the villas are surreally surrounded by lush greenery, and perfectly topped off with hills and plantations and easily accessible through NH 49. Helmed in a calm and quite atmosphere, each villa has fresh daylight wafting through its three-sided glass walls, enabling you to exorbitantly enjoy the day. We have minimised the usage of concrete to reduce all possible environmental and health hazards, thus making it an environment-friendly structure.



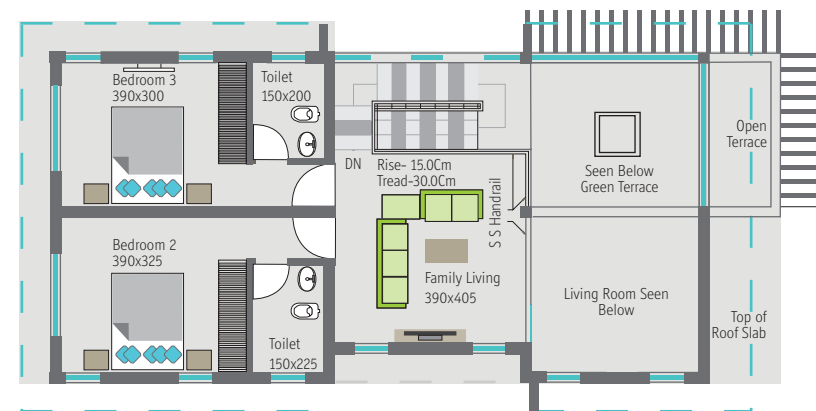


Unit Type - A1 (Glass Wall)

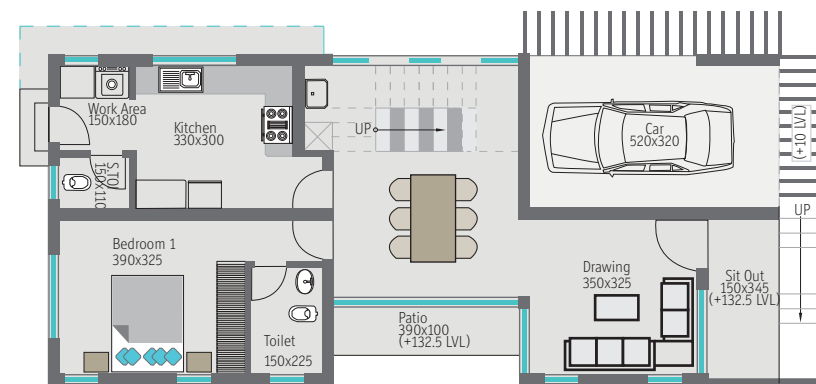
Area: Ground Floor 1097.49 sqft. First Floor 784.20 sqft.

Proportionate common area: 89 sqft

Total Area: 1970 sqft



FIRST FLOOR PLAN

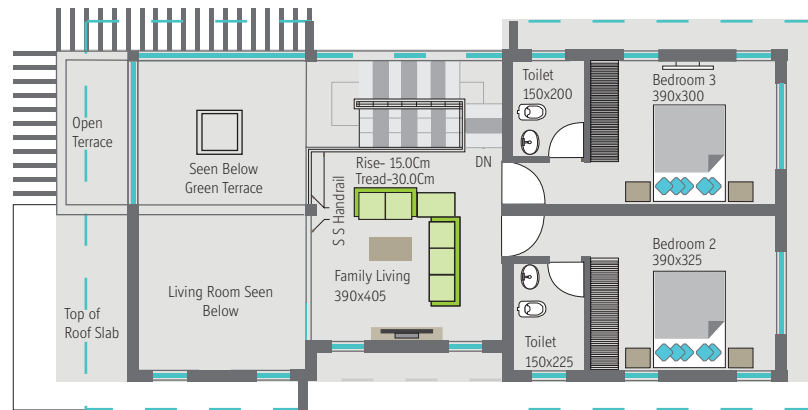


GROUND FLOOR PLAN

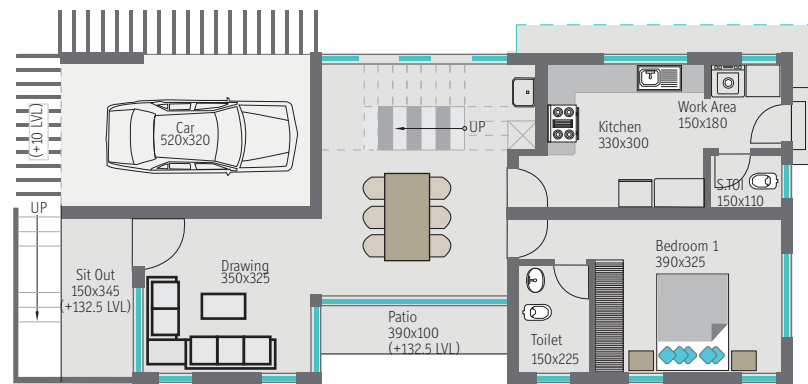


Unit Type - A1 (Brick Wall)

Area: Ground Floor 1097.49 sqft. **First Floor** 784.20 sqft.
Proportionate common area: 89 sqft
Total Area: 1970 sqft



FIRST FLOOR PLAN



GROUND FLOOR PLAN

Other A Type Villas (with same elevation)

A2 Ground Floor 1194 sqft
First Floor 863 sqft
Proportionate common area: 98 sqft
Total Area: 2155 sqft

A3 Ground Floor 1168 sqft
First Floor 842 sqft
Proportionate common area: 95 sqft
Total Area: 2105 sqft

A4 Ground Floor 1556 sqft
First Floor 1139 sqft
Proportionate common area: 130 sqft
Total Area: 2825 sqft



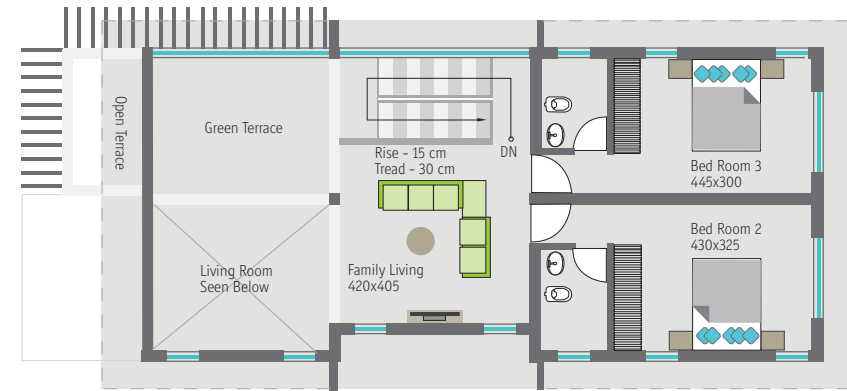


Unit Type - A5

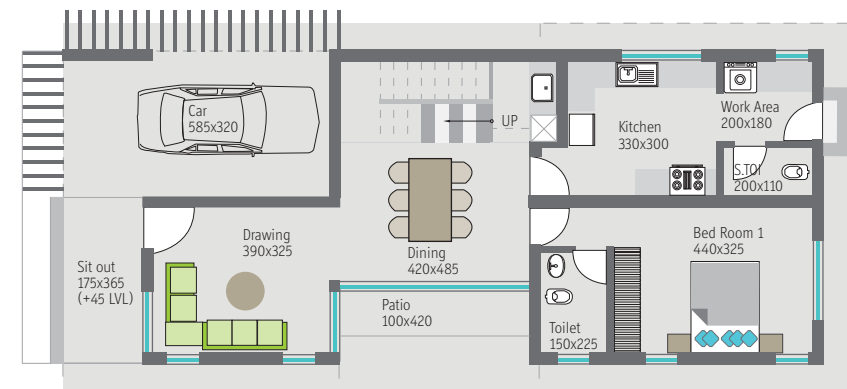
Area: **Ground Floor** 1200 sqft. **First Floor** 857 sqft.

Proportionate common area: 98 sqft

Total Area: 2155 sqft



FIRST FLOOR PLAN



GROUND FLOOR PLAN

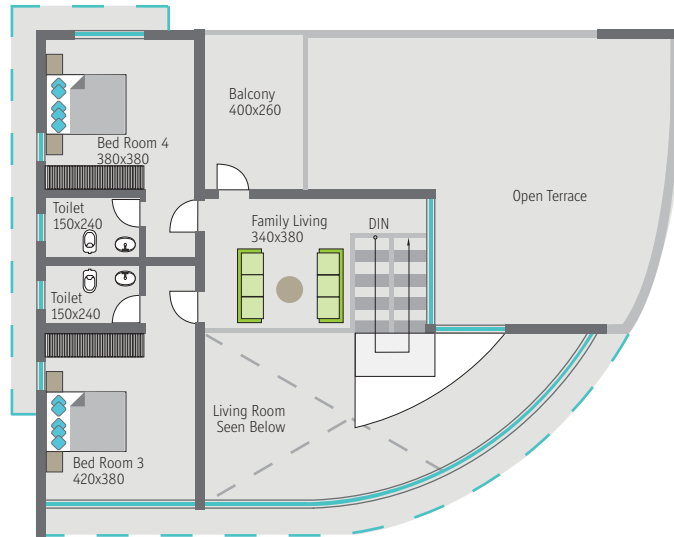


Unit Type - B

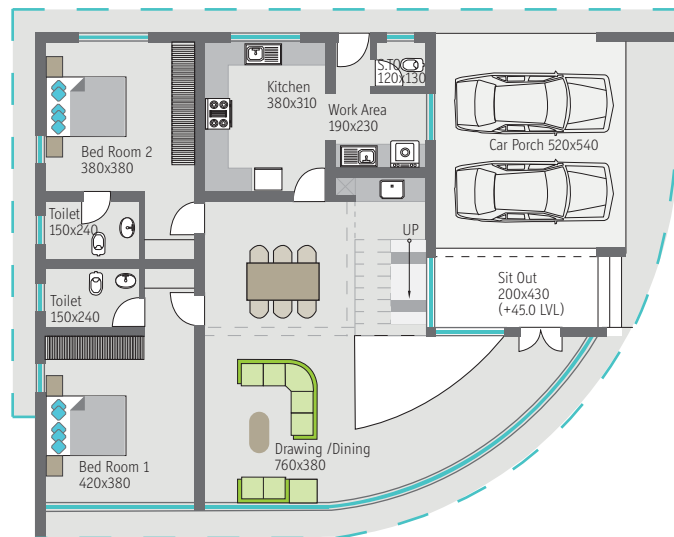
Area: **Ground Floor** 1959 sqft. **First Floor** 1041 sqft.

Propotionate common area: 140 sqft

Total Area: 3140 sqft

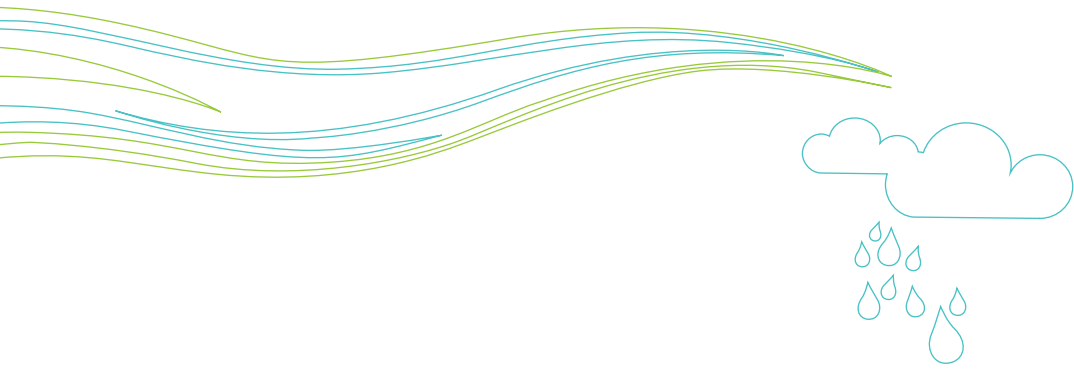


FIRST FLOOR PLAN



GROUN FLOOR PLAN



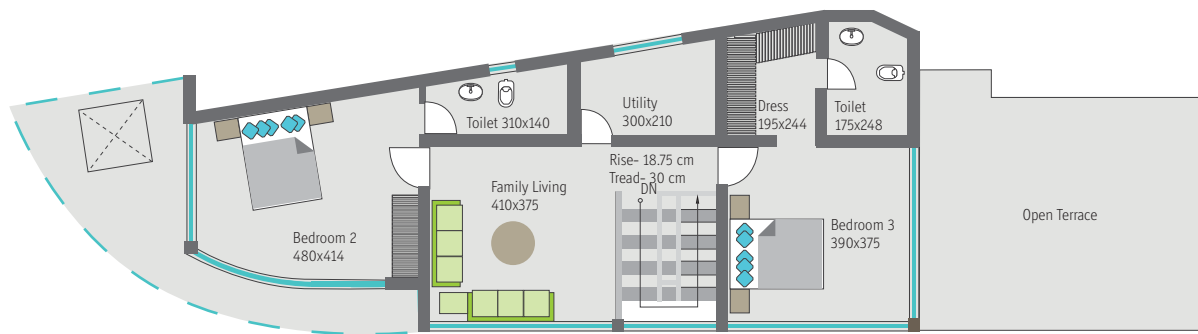


Unit Type - C

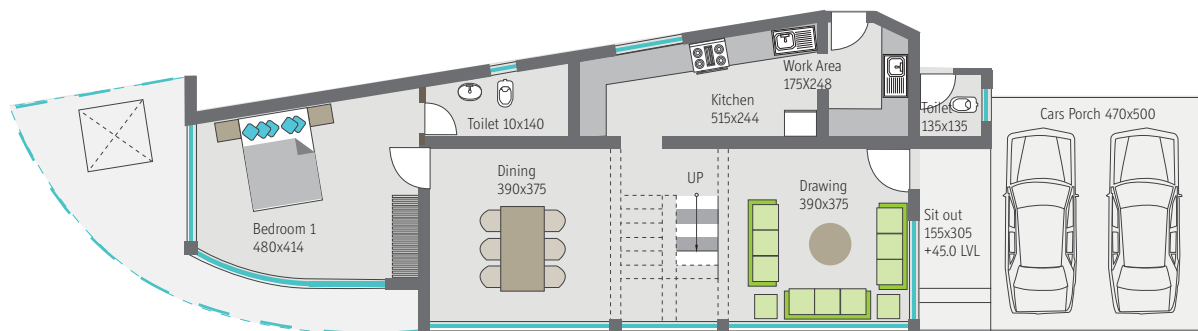
Area: Ground Floor 1269 sqft. First Floor 876 sqft.

Proportionate common area: 105 sqft

Total Area: 2250 sqft



FIRST FLOOR PLAN



GROUND FLOOR PLAN



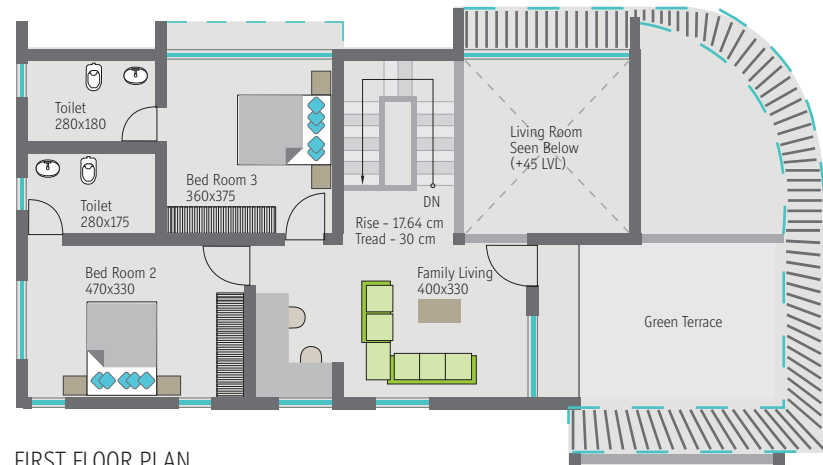


Unit Type - D

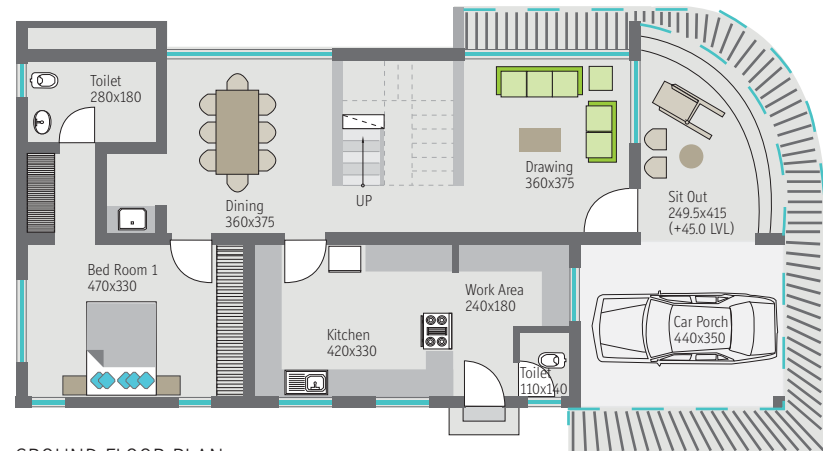
Area: **Ground Floor** 1312 sqft. **First Floor** 1013 sqft.

Proportionate common area: 110 sqft

Total Area: 2435 sqft



FIRST FLOOR PLAN



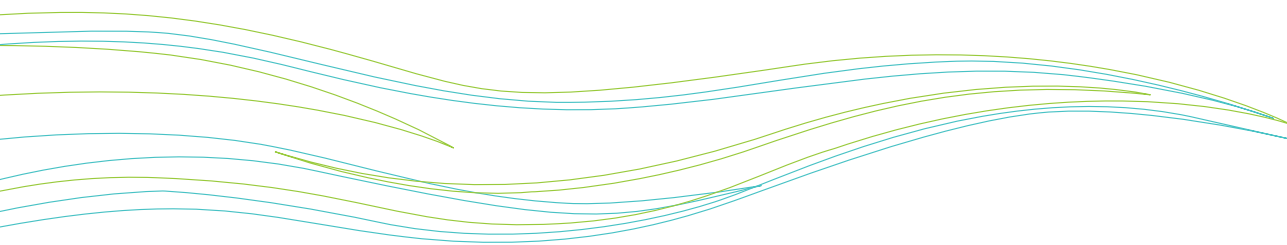
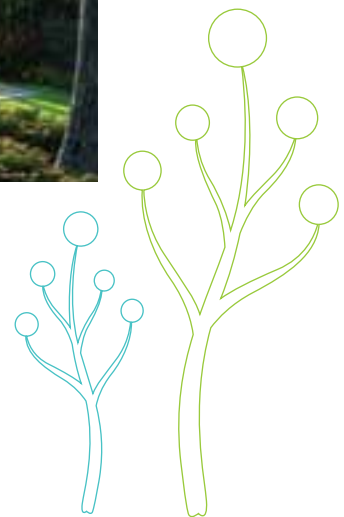
GROUND FLOOR PLAN



nature
live more...

Picture Gallery

nature
live more...





Specification

Structure

Foundation as suggested by the Structural Consultant, Load bearing brick wall structure and flat roof slabs, Concrete Block work masonry for walls.

Flooring

Vitrified tile for entire apartment except Master Bedroom, balconies and toilets. Laminated wooden flooring for Master Bedroom, Ceramic tiles for Kitchen and balconies.

Kitchen & counters

Granite counter top on Kitchen counter, wash counter. Stainless steel Sink with drain board. 60 cm dado above counter top in ceramic tiles. Electrical points for washing machine, water filter and 2 points for electrical appliances.

Toilets

Anti-skid Ceramic tile flooring, Ceramic tiles dado up to false ceiling. Concealed plumbing with PVC pipes and CP fittings of Hindware / Cera / imported brand, Matching Sanitary fixtures of Hindware / Cera / imported brand / Exhaust fans in all Toilets.

Painting

Multi Colour Premium emulsion paint over putty finish for internal walls of furnished units and one colour on unfurnished units. Weather shield emulsion for external walls, Enamel paint for woodwork and grills.

Electrical

Conceal conduits wiring with copper conductor controlled by ELCBs and MCSs. And Modular switches of Crabtree / Siemens / Schneider / equivalent brand

Doors & Windows

Elegant entrance door with frame imported, Jacson / Imported brand moulded skin doors for internal rooms, Fibre doors for toilets, Aluminium powder coated windows and ventilators.

nature
live more...



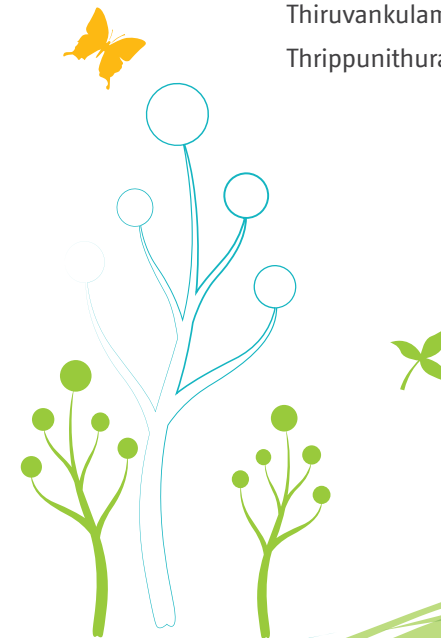


Amenities

- 7 & 5 Mtr wide Internal Roads
- Large Club House
- Fully equipped Health Club with Gymnasium, Jacuzzi & Sauna
- Swimming pool with separate change rooms and Kids pool
- Tennis cum Badminton Court
- Table Tennis, Billiards, Caroms and Chess
- Large Children Play area
- Solar Powered street lights
- Reverse Osmosis water purification system for individual villas
- Common Rain Water harvesting and Distribution system for entire project
- Option for Solar Power for individual villas
- Option for Rain Water Harvesting for individual villas
- Excellent cross ventilation and natural light through glass walls
- CCTV & IP camera security & Surveillance system
- 24x7 Security



NH 49	500 Mtrs
Seaport - Airport Road	8 Km
Smart City & Infopark	6 Km
Vyttila Jn	12 Km
Thiruvankulam Jn	5 Km
Thrippunithura Jn	8 Km



It is when seasoned technical expertise, perceptive financial intelligence and keen market insight come together, forms the foundation of a company that is strong, reliable and successful. We are built on ethical business practices and enduring customer relationship. Our traditional values are merged with contemporary thinking and foresight which allows us to continuously adapt to the rapidly changing market scenario.

EARTHSPACE is the fast growing premier in Real Estate Industry, Operating Nationally & Internationally. We target a leadership position in virtually all of the India's and International key business centres. Whether it's a local, regional, national, international, EARTHSPACE applies insight, experience, intelligence and resources to help our clients in transforming their dream of owning a Space on Earth in to reality for a comfortable and happy living. Our strengths, which are applied to every transaction, assignment and client relationship, which include :

- An intimate knowledge of virtually every major market where we operate
- Intellectual capital and technology resources that develop and deliver superior analytical, research and client service tools to its professionals
- A proven track record of meeting diverse client needs
- Leadership positions in nearly all service lines we are into
- An organisational structure that harnesses the firm's collective expertise

Our services are mainly devoted to Home Owners, Investors and Occupiers in the areas of :

- Property Development ■ Property Management ■ Property Care
- Commercial Real Estate

We firmly believe in the principle of 'Trust and Transparency' and these core principles represent the cornerstone of our business model that define and will continue to define all our endeavours.

Driven by green principles and the desire of an ever increasing number of our residential customers to live an environment-friendly lifestyle, we are dedicated to creating green living spaces where smiles, not statistics are the true measure of your life.

We just don't built homes, We convert the space into your most favourite place in this world

Reach Us

Cochin : Earthspace Builders & Developers,
41/406 E, 4th Floor, Beejay Towers, Rajaji Road, Cochin
Tel +91 484 403 1550 / 1551 | Fax: +91 484 4030172
Web : www.earthspace.in
E-mail : sales.earthspace@gmail.com

Qatar : Earthspace W.L.L., P. O. Box 64129, Doha, Qatar

SALES ENQUIRY

India : + 91 99460 55444 / 99460 55333
Qatar : + 974 5553 7878, 3308 3070
UAE : + 971 50 159 3838
Email : sales.earthspace@gmail.com

Other Projects from Us

Earthspace Ease

a 40 Villas compound at Edappally, Cochin -Completed and Handed over

Earthspace Greens phase 1

a 25 Villa compound at N. Paravur, Cochin - Ongoing

Earthspace Greens phase 2

40 Villa CDV project at N. Paravur, Cochin - Ongoing

Earthspace Transit

Fully furnished Apartment Hotel project at Nedumbassery, Cochin - Ongoing

Earthspace Dezire

25 Villa compound at Vadavathur, Kottayam - Upcoming

Follow us



www.facebook.com/earthspacelife

